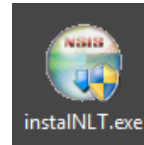
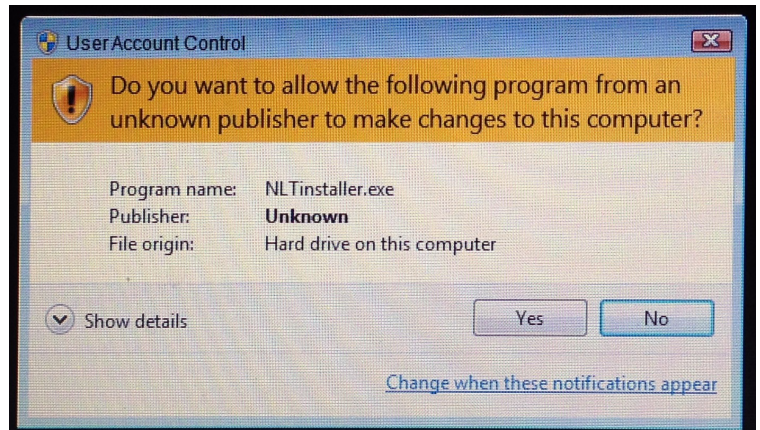


To Install

Double click on installNLT.exe to launch the NLT Setup window.



Select Yes



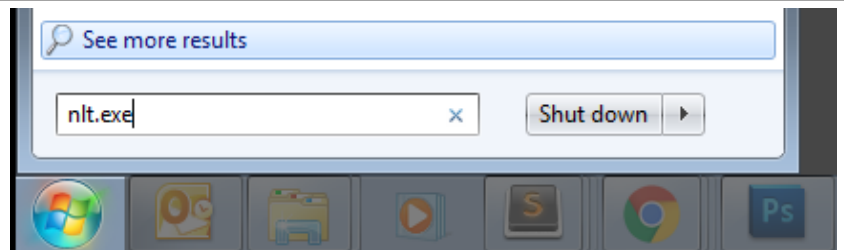
In the NLT Setup window, select a destination folder for program files. If no destination is selected, files will go in Program Files\NLT by default.

Click  to continue.

When installation is complete

Click 

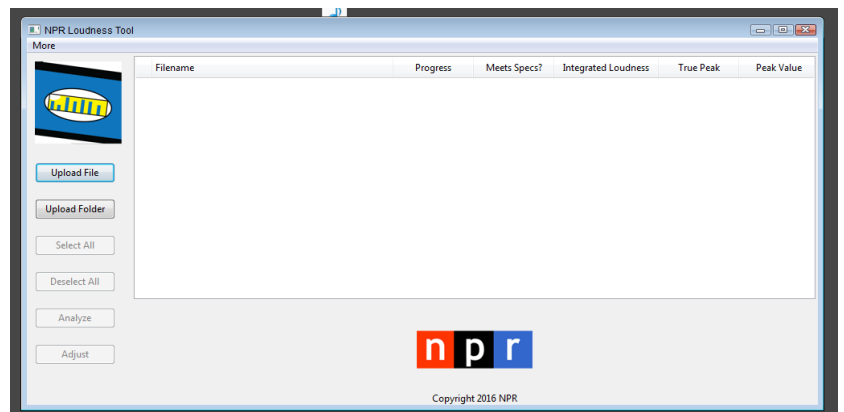
From the start menu, search for NLT.exe



Double click on NLT to launch
-or-
Right click and Select "Open"



NLT has been successfully launched.



To Use

To include audio files, select, drag and drop onto the window

-or-

click and select files

Note: only audio files will be available, all others will be grayed out

-or-

click and select a folder – all audio files in that folder will be included

(currently supported file types are wav, mp3, mp2, aiff and m4a)

Filename	Progress
<input checked="" type="checkbox"/> file.mp3	<input type="text"/>
<input checked="" type="checkbox"/> file.wav	<input type="text"/>

Once the files have been selected, you may or them.

calculates the Integrated Loudness, True Peak and Peak Value for the file and indicates if all three meet the PRSS submission specification.

Filename	Progress	Meets Specs?	Integrated Loudness	True Peak	Peak Value
<input checked="" type="checkbox"/> file.mp3	<div style="width: 100%; height: 10px; background-color: green;"></div>	No	-22.0	-2.9	-2.9
<input checked="" type="checkbox"/> file.wav	<div style="width: 100%; height: 10px; background-color: green;"></div>	No	-12.0	0.6	0.4

(Spec: Integrated Loudness -24 LUFS, ± 2 LU, Peak Values ≤ -3 dBFS or True Peaks ≤ -2 dBTP)

creates a second file, called *file_adjusted.wav* and saves it in the same location as the original file, which has an Integrated Loudness close to -24 LUFS and peaks that comply with the submission specification

Note: if the file has not been analyzed, the button will perform both the analysis and the adjustment.